

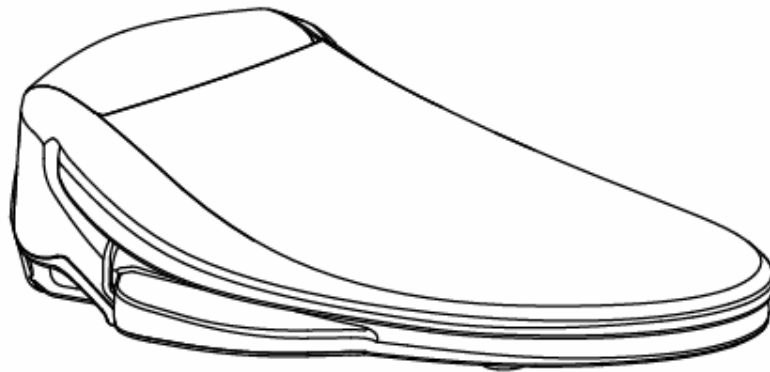


# Swash<sup>®</sup> Ecoseat

advanced toilet seat

## OWNER'S MANUAL

Round      S250-RW / RB  
Elongated   S250-EW / EB



**This manual contains important safety information.  
Please read it carefully before product installation or use.**

# Important Safeguards



CAUTION

For safety reasons, please read this entire manual before use.



CAUTION

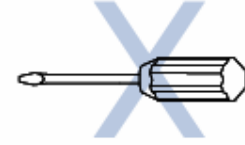
Please use caution and avoid spraying water directly on the Swash Ecoseat.



Do not use harsh brushes or abrasive detergents to clean the Swash Ecoseat. Use only mild soap and a soft cloth for cleaning.



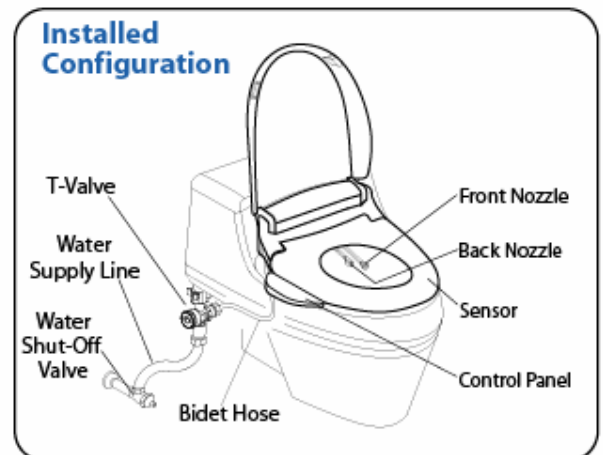
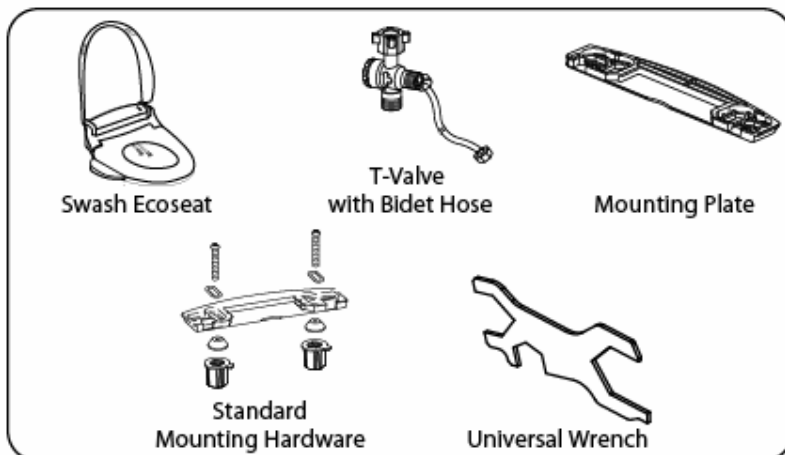
Do not disassemble or modify the Swash Ecoseat. Only an authorized service representative should perform repairs.



## Specifications

Model	S250 RW / RB	S250 EW / EB
Rated Power Source	4 x AA - size Alkaline Batteries	
Tap Water Pressure	0.5-7.5 kgf/cm <sup>2</sup> (7 - 106 psi)	
Rated Power Consumption	3 Watts	
Seat & Lid	Soft Closing	
Maximum Spray Volume	1.0 liter / min (0.26 gal / min)	
Product Dimensions	17.1"W x 19"L x 6.0" H 433mm W x 483mm L x 153mm H	17.1"W x 20"L x 6.0" H 433mm W x 511mm L x 153mm H
Product Weight	2.6 kg / 5.7 lbs	

## Parts & Configuration



Typical install time: 30-60 minutes

Residual moisture on the product is

**NORMAL**

Every product is tested with pure water during production to ensure the highest quality and performance. It is normal to find residual moisture on the product and in the reservoir.

# Before Installation

## Tools Needed

- Flat head screwdriver
- Phillips screwdriver
- Universal Wrench (included)
- Measuring tape

**NOTE:** The included Universal Wrench will work for most applications. Depending on your toilet configuration, an adjustable wrench may also be needed.

## Alternate Mounting Hardware

Some toilet fixtures are design with only top-side access. To install the Swash Ecosat onto these type of fixtures, an Alternate Mounting Kit is required.

To have a set of the Alternate Mounting Kit delivered to you, please call Brondell at 888-542-3355.

## Check Water Supply Line

Check the line that connects the toilet tank to the water shut off valve. If it is a rigid pipe, you may need to purchase a flexible hose to replace it before installing the Swash Ecosat. The length of the hose and the size of the connectors will vary.

# Installation

**CAUTION** Please read these instructions carefully before installing the Swash Ecosat. Failure to do so could result in flooding, leaking, or damage to the product. **CAUTION**

## 1) Remove Toilet Seat

- Lift hinge covers and use a screwdriver to remove the mounting bolts.
- Remove the toilet seat.

Steps may vary by type of seat.

## 2) Turn Water Off and Flush Toilet

You may wish to place a container under the tank to catch any leaking that could occur during installation.

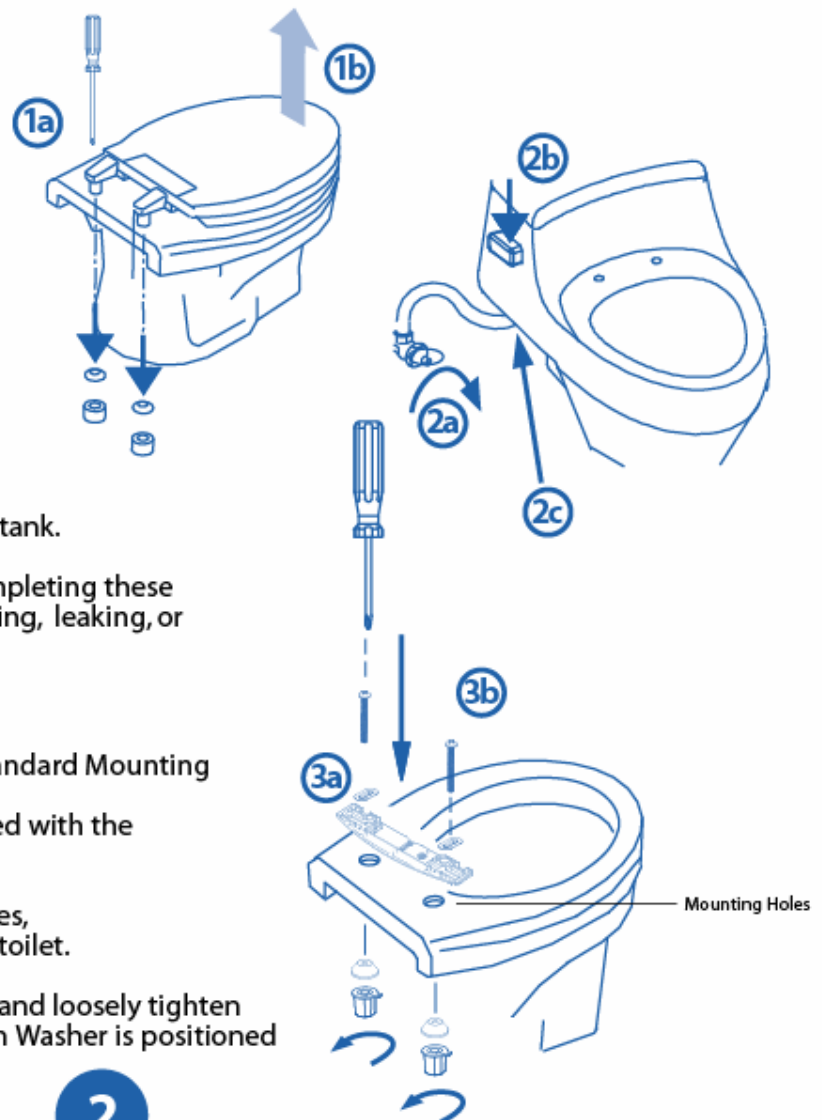
- Turn water valve off completely.
- Flush the toilet to empty the tank.
- Disconnect water supply line from toilet tank.

**IMPORTANT:** Do not continue without completing these steps! Failure to do so could result in flooding, leaking, or damage to the Swash Ecosat.

## 3) Install Mounting Plate

**NOTE:** The following instructions are for standard Mounting Hardware. Separate instructions will be included with the Alternate Mounting Kit.

- Place Mounting Plate over mounting holes, flat side down, curve toward the back of toilet.
- Insert bolts through the Mounting Plate and loosely tighten the Mounting Nuts. Make sure the Crush Washer is positioned with the tapered end up (see graphic).



# Installation (continued)

## 3) Install Mounting Plate (continued)

- c) Adjust mounting plate so length (L) between the front of the toilet bowl and the back of the mounting plate is as follows:

**Round (Ecoset S250 - RW or RB):** L = 18 1/4" (465 mm)  
**Elongated (Ecoset S250 - EW or EB):** L = 20 1/2" (495 mm)

- d) Tighten Mounting Bolts with screwdriver until the mounting plate is securely fastened to the toilet.

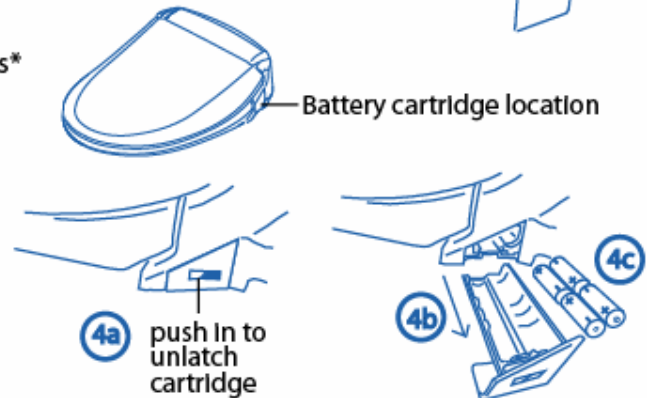


## 4) Insert Batteries

The Swash Ecoset requires 4 x AA size batteries\*

- Push in the cartridge door to unlatch.
- Pull the cartridge away from the Ecoset.
- Place batteries into the battery slot.
- Re-insert the cartridge into the Ecoset.
- Push the cartridge all the way in until you hear a "click" indicating the cartridge is latched onto the Ecoset.

\*batteries are NOT included

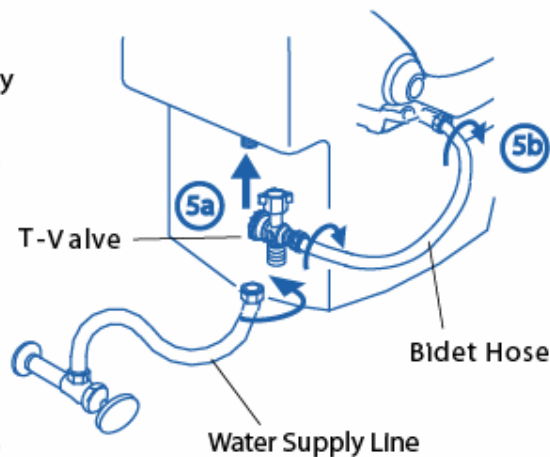


## 5) Connect T-Valve and Hoses

If your water supply line is rigid, you may need to replace it before continuing.

- Install the T-Valve between the water supply line & the toilet tank.
- Place the Swash Ecoset on or beside the toilet and connect the Bidet Hose to the Swash Ecoset.

**IMPORTANT!** Use wrench to tighten all connections before continuing. Failure to do so could result in flooding, leaking, or damage to the Swash Ecoset.



## 6) Attach the Swash Ecoset

Slide the Swash Ecoset onto the mounting plate.

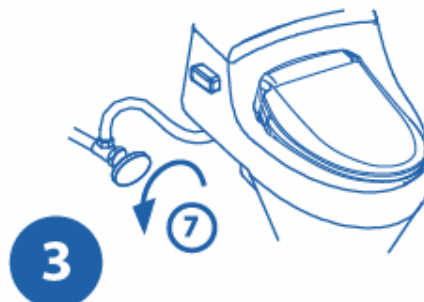
You will hear a "click" indicating the seat has been properly attached.

To release the Swash Ecoset: push the button located on the right hand corner of the seat and gently pull.



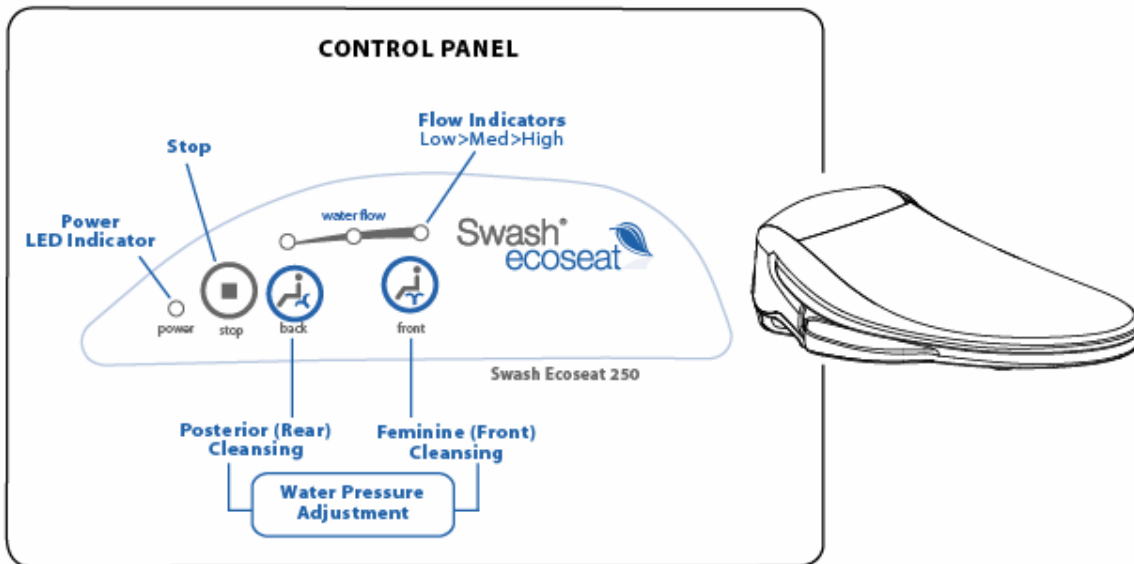
## 7) Turn On Water

- Turn the water valve back on slowly. Ensure the connections are not leaking before continuing.



# Operation

The Swash Ecosseat is designed to function only when seat is occupied.



## Using the Swash Ecosseat

### Water Washing:

Sit on the seat and press the FRONT or BACK button to begin water flow. Press the STOP button to discontinue the water flow.

### Water Flow/Pressure Adjustment:

While seated, you may adjust the water pressure by pressing the FRONT or BACK button repeatedly until the desired pressure is reached. There are three levels of water pressure to choose from.

### LED Indicators

Every time a button is pressed, the "power" & "water flow" LED's will flash for 5 seconds

### View of Side Control Panel

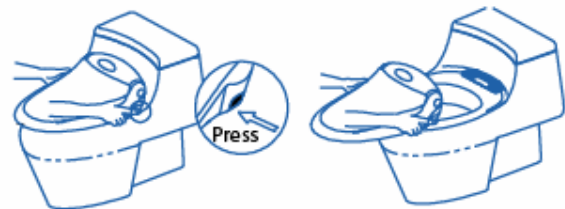


# Maintenance

## Seat Cleaning and Removal

Use a soft, damp cloth and mild cleanser (such as dish soap) to wipe down the seat. DO NOT scrub or use harsh, abrasive products to clean the Swash Ecosseat.

For a more thorough cleaning, you may remove the Swash Ecosseat. To release, push the button located on the back right side of the seat and pull forward.



## Nozzle Cleaning

It is recommended that you clean the retractable nozzles monthly or as necessary. To clean the nozzles, pull them out gently and use a soft, damp brush or cloth to wipe down. DO NOT use soap or detergents to clean the nozzles.



## Filter Cleaning

For proper Swash Ecosseat function, it is important to occasionally clean the filters. Frequency of cleaning depends on your local water supply. Clogged filters cause decreased water flow, affecting operation.

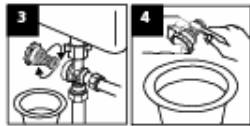
# Troubleshooting

	Issue	Possible Causes	Solution
1	Low water flow or pressure	1) Clogged filter 2) Twisted hose 3) Household water pressure low	1) Clean filter 2) Straighten the hose 3) Increase water pressure to the Swash
2	Nozzles do not function properly	1) Nozzles are dirty 2) Clogged filter 3) Water pressure is too low	1) Clean the nozzles 2) Clean the filters 3) Adjust water pressure
3	Nozzles fail to retract	Nozzles are dirty	Clean the nozzles
4	Washing feature does not work or fails to spray	1) User not properly seated 2) The switch sensor is not contacting the fixture surface properly 3) Dead batteries	1) Adjust your sitting position 2) Make sure the sensor is contacting the toilet fixture surface 3) Replace batteries
5	Product shuts off during use	1) Washing time exceeded 5 minutes 2) Dead batteries	1) Repeat Cleaning function 2) Replace batteries

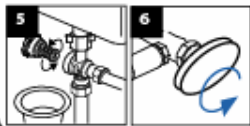
## T-VALVE FILTER:



- 1) Turn water valve off completely.
- 2) Flush the toilet to empty the water tank. (Failure to do so could result in leaking or flooding!)

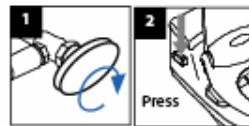


- 3) Unscrew the filter from the T-Valve. (the end not connected to a hose)
- 4) Gently brush and clean the filter with water to remove build-up.

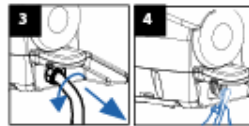


- 5) Reconnect the filter to the T-Valve.
- 6) Turn the water valve back on.

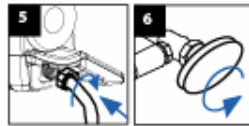
## BIDET-HOSE FILTER:



- 1) Turn water valve off completely.
- 2) Flush the toilet to empty the water tank. (Failure to do so could result in leaking or flooding!)



- 3) Disconnect the Bidet Hose from the Swash Ecoset.
- 4) Gently brush and clean the filter with water to remove build-up.



- 5) Reconnect the Bidet Hose to the Swash Ecoset.
- 6) Turn the water valve back on.

For other issues or questions, contact Brondell Customer Service:  
**1-888-542-3355**

### Contact Information

Brondell Inc.  
PO Box 470085  
San Francisco, CA 94147-0085

Phone: 1-888-542-3355  
E-mail: [support@brondell.com](mailto:support@brondell.com)  
WEB: [www.brondell.com](http://www.brondell.com)

### Warranty

The Swash Ecoset is covered by a one year warranty, valid from the original date of purchase.

Please complete & return the enclosed registration card to receive important product updates.